



MODEL: LS100-S12KD SIZE: 129*97*30mm
LS100-S24KD

Product overview

100W

industrial power supply

MODEL LS100-S12KD / LS100-S24KD

INPUT 100~220V AC

OUTPUT 12V DC 8.33A / 24V DC 4.17A 100W

Product Features

- Adopt AC/DC transmission
- Adapt to harsh working environments
- Adopting an isolated design, safe and reliable
- Prevent instantaneous surge impact
- Overload, short circuit, and overvoltage protection functions
- Wide range of input
- Passed CE certification

ELECTRICAL DATA

AC Input

Input voltage range	100~250V
Input frequency	50/60Hz
Conversion efficiency (typical)	87% 12V / 88% 24V
Input current	110V: 1.6A max.
Inrush current	60A
leakage current	5mA/220VAC

DC Output

output voltage	12V / 24V
output current	8.33A / 4.17A
output power	100W
Ripple and noise	<120mVp-p
Startup time	1500ms/220VAC
Line regulation	±0.5%

working environment

Working temperature	-20°C~70°C
Humidity at work	15~85%RH
Storage temperature	-40°C~85°C
Storage humidity	15~95%RH

protect

overload protection There is overload protection, and when the load voltage exceeds 105-130% of the rated load, the power supply will automatically cut off the output. Protection mode is in off mode.

ScP There is short-circuit protection, and the protection mode is in turn off mode. When the short-circuit fault is resolved, automatic recovery work is carried out

Safety Regulations

Safety standards	GB4943/IEC62368, EN61558
Pressure resistance	I/P-O/P: 3750VAC/1min/<5mA
insulation	I/P-O/P: >100M Ohms / 500VDC /25°C / 70%RH

EMC

EN55032 CLASS A

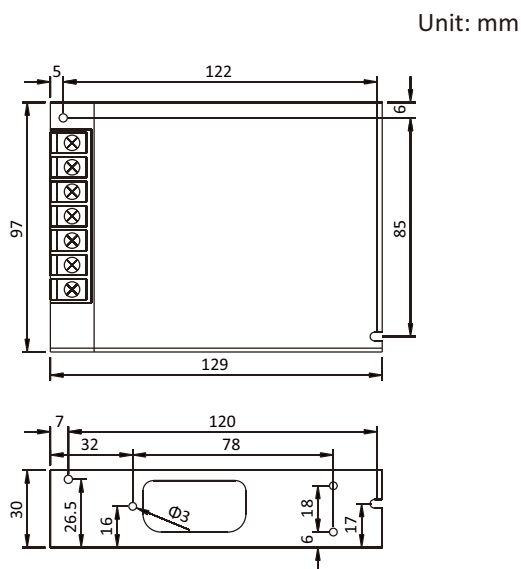
Packaging

product size	129*97*30mm
Net weight	290g±5g
Quantity per box	40PCS
Carton Size	39*28.5*23cm
G.W	13.1KG

Warm reminder:

-Load short circuit and overload can cause power protection, resulting in the power supply not working properly. -The connection line between the power supply and the load should follow the principle of being as short as possible, either over or over
Thin connecting wires can cause voltage drop on the circuit, while overly thin connecting wires can also easily lead to
Potential safety hazards.
-Maintaining good ventilation and heat dissipation is crucial for the lifespan of the power supply.

product appearance



Product overview

100W

industrial power supply

MODEL LS100-S12KD / LS100-S24KD

INPUT 100~220V AC

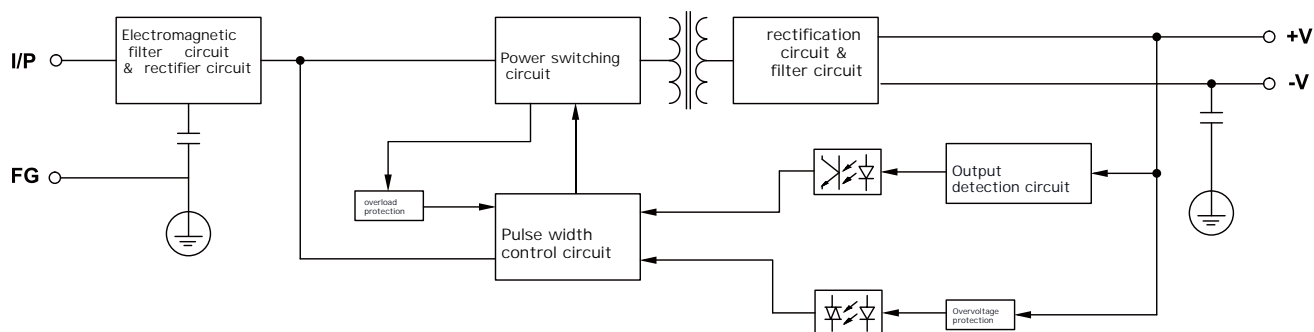
OUTPUT 12V DC 8.33A / 24V DC 4.17A 100W

Terminal input/output

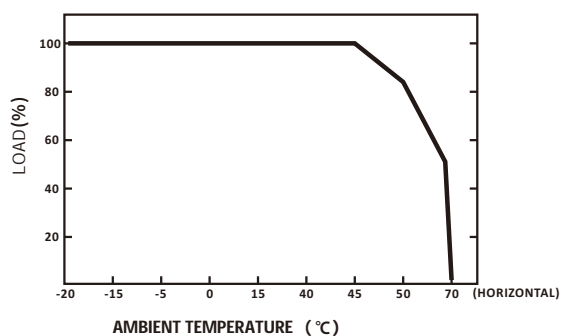
HB9500-7P flame retardant terminal
with terminal cover

Shell: Aluminum alloy shell

block diagram



Temperature derating curve



Voltage derating curve

