

Model : LS36-S12 / LS36-S24

Size: 88*58*30mm

Product overview

36W

Industrial control power

Model LS36-S12 / LS36-S24

Input 100~250VAC

Output 12VDC 3A / 24VDC 1.5A 36W

Product Features

- Use AC/DC input
- Adapt to harsh working conditions
- Isolated design for safety and reliability
- Protection against transient surge impact
- Overload, short circuit and overvoltage protection
- Wide range of inputs
- CE certification in compliance with LVD safety requirements

ELECTRICAL DATA

AC Input

Input voltage range	100~250V
Input frequency	50~60Hz
Conversion efficiency (typical)	83% 12V 86.5% 24V
Input current	110V:0.66A max.
Surge current	65A
Leakage current	5mA/220VAC

DC Output

output voltage	12V / 24V
output	3A / 1.5A
Output power	36W
Ripple and noise	<120mVp-p
(maximum) start time	1500ms/220VAC
Linear adjustment rate	±0.5%
load regulation	±0.5%

Workingronment

Working temperature	-20~+70°C
Humidity at work	15~85%RH
Storage temperatur	-40°C~85°C
Estorage humidity	15~95%RH

Protect

overload protection Overload protection, when the load voltage exceeds the rated load At 110~ 140%, the output voltage is turned off. The protection mode is the hiccups mode.

short-circuit protection There is a short circuit protection, the protection mode is hiccups mode, when there is a short circuit When the fault is removed, it automatically resumes work.

Safety standard

Safety standard for voltage withstand insulation	Complies with GB4943/ IEC62368, EN61558 complies with CE-LVD I/P-O/P:3750VAC/1min/<5mA I/P-O/P:>100MOhms/500VDC/25°C/70%RH
--	--

Electromagnetic Compatibility

EN55032 CLASS A

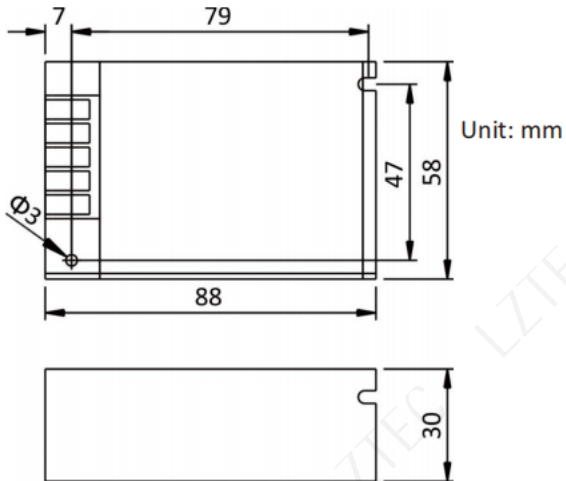
Packaginginf-ormation

Products size	88*58*30mm
Netweightofproduct	110g±5g
Packingquantity	120PCS
Cartonsize	39*30.5*28cm
Weightperbox	16.3KG

Kindly reminder :

- Load short circuit, overload will cause power protection, resulting in the power supply can
- The connection between the power supply and the load should follow the principle of as short as possible. Too long or too thin connection line will produce voltage drop on the line, and too thin connection line is easy to cause safety risks.
- Maintaining good ventilation and heat dissipation is critical to the life of the power supply.

Product profile



Product overview

36W

Industrial control power

Model LS36-S12 / LS36-S24

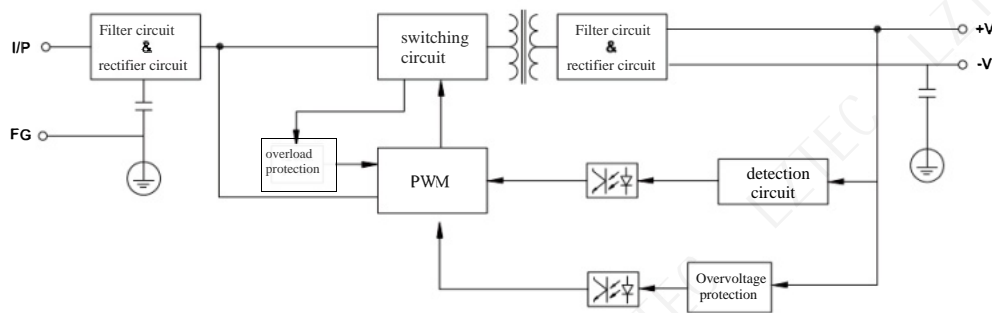
Input 100~250VAC

Output 12V DC 3A / 24VDC 1.5A 36W

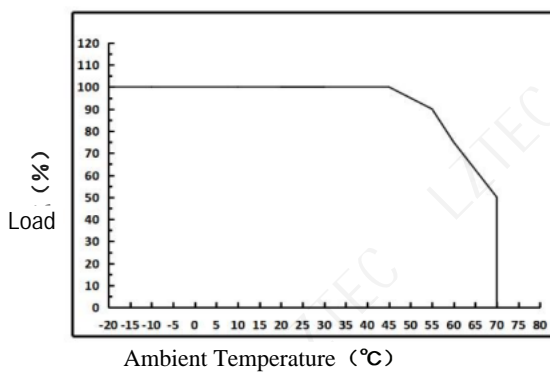
Portable input/output

HB-635-5P flame retardant terminal with terminal cover

Shell: Aluminum alloy shell



Temperature derating curve



Voltage reduction curve

